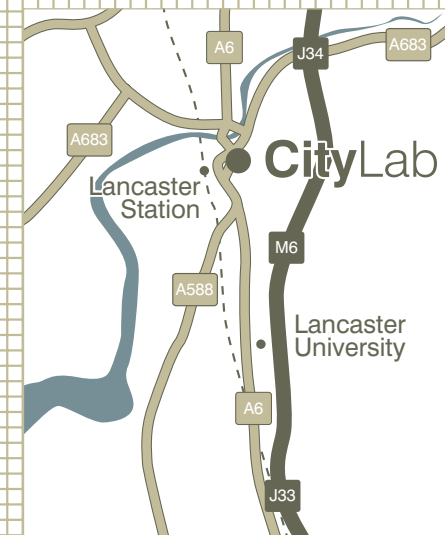




## FACILITIES TO INSPIRE

From a shared reception and answering service, through to administrative back up, all the support and facilities you need are under one roof at CityLab. You can also make use of the superb meeting facilities and state-of-the-art audio visual technology.

- Shared services means overheads are kept low
- Meeting rooms, with stylish relaxation and networking areas
- Copying and fax facilities and administrative services
- Wider business support services available
- 24 hour 7 days a week access by integrated intelligent swipe system



## LOCATED AT LANCASTER'S HISTORIC DALTON SQUARE, CITYLAB OFFERS EASY ACCESS BY BOTH ROAD AND RAIL

Economic Development and Tourism Service  
 Lancaster City Council  
 Palatine Hall  
 Dalton Square  
 Lancaster  
 LA1 1PW  
 Tel 01524 582081  
 Fax 01524 582166



For further information please call 01524 582081 or visit our website  
**WWW.CITY-LAB.CO.UK**



LANCASTER & MORECAMBE

# CityLab

## STYLISH & FLEXIBLE MANAGED SPACE FOR EMERGING ICT AND KNOWLEDGE-LED COMPANIES



## COMPETITIVE ADVANTAGE FOR GROWING BUSINESSES

CityLab is designed for emerging technology and knowledge-led businesses seeking stylish, hi-tech managed offices at competitive rents. Located in the heart of Lancaster - one of the North West's fastest growing employment areas - the development is easily accessible by road and rail and close to all the amenities of a thriving city centre.

- Low-cost rents and overheads with flexible terms
- 1,500 sq m of modern commercial space especially for small businesses
- High specification ICT supported by Lancaster University's world class infrastructure
- Prime city centre location
- Shared services and facilities, including reception and well-equipped meeting space
- Associate membership of Lancaster University's InfoLab21 for appropriate businesses

**LANCASTER & MORECAMBE**  
 LEADING BUSINESS INNOVATION

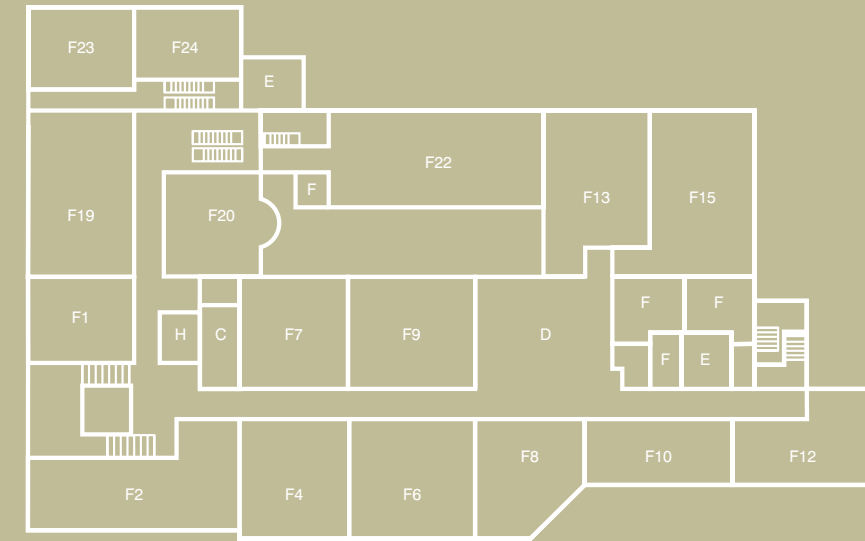
## GROUND FLOOR



**Unit sizes**

	ft <sup>2</sup>	m <sup>2</sup>		
G4	804	74.7	A	Lobby/reception
G5	361	33.5	B	Meeting room
G6	225	20.9	C	Interview room
G7	432	40.1	D	Breakout area
G8	196	18.2	E	Kitchen
G10	325	30.2	F	Toilet
G11	420	39.0	G	Shower
G12	115	10.7	H	Lift
G13	1057	98.2	I	Terrace
G14	185	17.2		
G16	197	18.3		
G26/27	376	34.9		

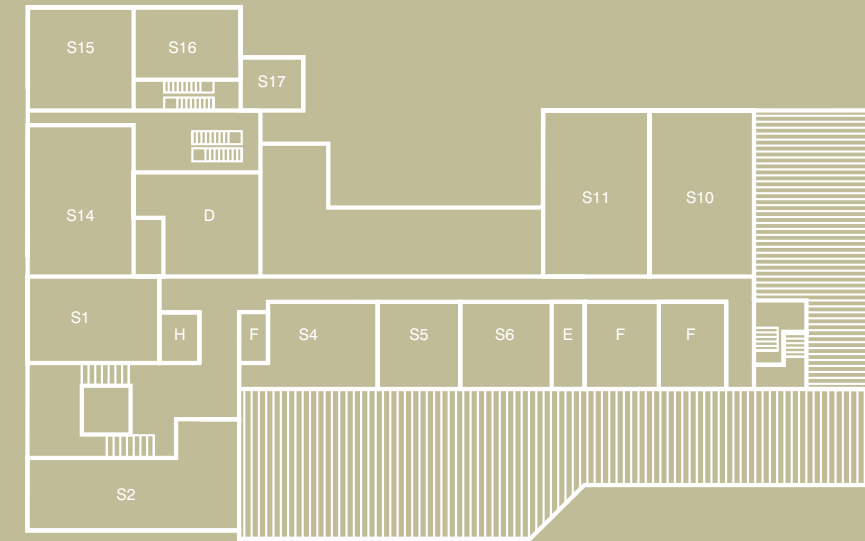
## FIRST FLOOR



**Unit sizes**

	ft <sup>2</sup>	m <sup>2</sup>		ft <sup>2</sup>	m <sup>2</sup>
F1	207	19.2	F12	304	28.2
F2	485	45.05	F13	427	39.7
F4	236	21.9	F15	518	48.1
F6	284	26.4	F19	388	36.0
F7	354	32.9	F20	269	25.0
F8	244	22.7	F22	462	42.9
F9	427	39.7	F23	274	25.5
F10	260	24.2	F24	178	16.5

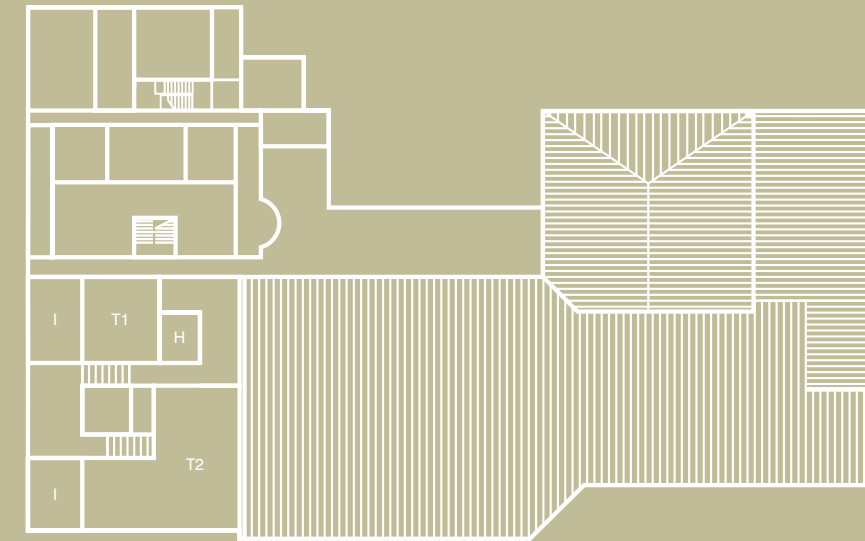
## SECOND FLOOR



**Unit sizes**

	ft <sup>2</sup>	m <sup>2</sup>
S1	287	26.7
S2	577	53.6
S4	228	21.2
S5	144	13.4
S6	174	16.2
S10	490	45.5
S11	476	44.2
S14	394	36.6
S15	288	26.8
S16	179	16.6
S17	76	7.1

## THIRD FLOOR



**Unit sizes**

	ft <sup>2</sup>	m <sup>2</sup>
T1	188	17.5
T2	553	51.4

